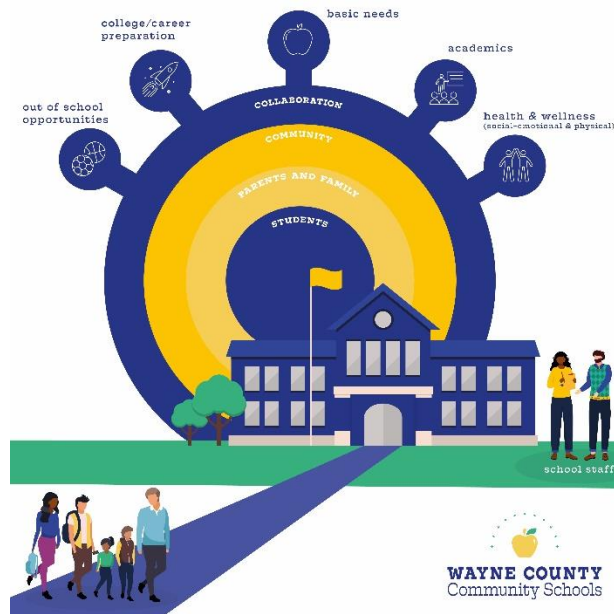


# Wayne County Community Schools Resource Map: 2022-2023



Last updated 1.4.23

Next Update – August 2023

# **Wayne County School Districts**

## **Table of Contents**

**Clyde Savannah \*\*\*\* Page 3**

**Gananda \*\*\*\* Page 4**

**Lyons \*\*\*\* Page 5**

**Marion \*\*\*\* Page 6**

**Newark \*\*\*\* Page 7**

**North Rose-Wolcott \*\*\*\* Page 9**

**Palmyra-Macedon \*\*\*\* Page 10**

**Red Creek \*\*\*\* Page 12**

**Sodus \*\*\*\* Page 13**

**Wayne \*\*\*\* Page 15**

**Williamson \*\*\*\* Page 16**

**Wayne Education Center – WFL BOCES \*\*\*\* Page 17**

# Clyde-Savannah Central School District

## Clyde-Savannah School Administration:

Clyde-Savannah Elementary School ..... Main Office: 315.902.3100  
Elem. Principal: Jennifer Kelsey [jennifer.kelsey@clydesavannah.org](mailto:jennifer.kelsey@clydesavannah.org) 315.902.3100  
Assistant Principal: Erin Wood [erin.wood@clydesavannah.org](mailto:erin.wood@clydesavannah.org) 315.902.3100

Clyde-Savannah Jr. High School ..... Main Office: 315.902.3200  
Jr. High Principal: Justin Fries [justin.fries@clydesavannah.org](mailto:justin.fries@clydesavannah.org) 315-902-3200

Clyde-Savannah High School ..... Main Office: 315.902.3050  
High School Principal: Dr. Craig Pawlak [craig.pawlak@clydesavannah.org](mailto:craig.pawlak@clydesavannah.org)  
Dir of Special Ed and Pupil Personnel Services - Chris Nicol [chris.nicol@clydesavannah.org](mailto:chris.nicol@clydesavannah.org)

## Clyde-Savannah In House Support

Elementary School counselor- Justin Allen [Justin.allen@clydesavannah.org](mailto:Justin.allen@clydesavannah.org)  
Elementary Social Worker-Joseph Dewolf [Joseph.dewolf@clydesavannah.org](mailto:Joseph.dewolf@clydesavannah.org)  
Preschool Coordinator - Amy Fisher [amy.fisher@clydesavannah.org](mailto:amy.fisher@clydesavannah.org)  
Elementary Nurse: Kelly Smart, R.N. [kelly.smart@clydesavannah.org](mailto:kelly.smart@clydesavannah.org)  
Elementary Nurse: Wende Edwards, LPN [wende.edwards@clydesavannah.org](mailto:wende.edwards@clydesavannah.org)

MS Registered Nurse: Andrea Roelle [andrea.roelle@clydesavannah.org](mailto:andrea.roelle@clydesavannah.org) 315-902-3020  
Jr. Sr. HS Psychologist: Megan Furman [megan.furman@clydesavannah.org](mailto:megan.furman@clydesavannah.org) 315-902-3050  
HS Social Worker: Cari VanStrien [cari.vanstrien@clydesavannah.org](mailto:cari.vanstrien@clydesavannah.org) 315-902-3050

Physical therapy: Morgan Montgomery [morgan.montgomery@clydesavannah.org](mailto:morgan.montgomery@clydesavannah.org)  
Occupational Therapy: Allison Williams [Allison.williams@clydesavannah.org](mailto:Allison.williams@clydesavannah.org)  
Speech Language: Katrina Briggs [Katrina.briggs@clydesavannah.org](mailto:Katrina.briggs@clydesavannah.org)  
ENL: Teresa Grigg [teresa.grigg@clydesavannah.org](mailto:teresa.grigg@clydesavannah.org) Melissa Ridley (part-time ENL)  
[Melissa.ridley@clydesavannah.org](mailto:Melissa.ridley@clydesavannah.org)

## Clyde-Savannah Co-Located Services

Delphi Rise – Gregg Dougherty-Herman Prevention Educator - [gdougherty-herman@delphirise.org](mailto:gdougherty-herman@delphirise.org)

FCSFL - 21<sup>st</sup> Century Advocacy Support and Prevention Advocacy Support (This is split with Lyons)

Wayne Behavioral Health Network – To refer a student for School-Based Mental Health Services for MH treatment with the identified therapist assigned to Clyde School District, contact WBHN Intake

Coordinator at 315-946-5722. Or you can also access outpatient services at our clinic at 1519 Nye Road, Lyons by contacting the above number.

# Gananda Central School District

**Richard Mann Elementary School** ..... Main Office: 315.986.3521 x1511

Principal: Katy Lumb [klumb@gananda.org](mailto:klumb@gananda.org)

Assistant Principal: Melissa Reeves [mreeves@gananda.org](mailto:mreeves@gananda.org)

**Middle School** ..... Main Office: 315.986.3521 x2423

Principal: Elliot Butt [ebutt@gananda.org](mailto:ebutt@gananda.org)

Assistant Principal: Bob Caulkins [bcaulkins@gananda.org](mailto:bcaulkins@gananda.org)

**Ruben A. Cirillo High School** ..... Main Office: 315.986.3521 x3154

Principal: Matthew Mahoney [mmahoney@gananda.org](mailto:mmahoney@gananda.org)

Assistant Principal: Jacki Mader [jmader@gananda.org](mailto:jmader@gananda.org)

## Gananda In House Support

**Richard Mann Elementary School** ..... Office: 315 986-3521

Counseling: John Strachan [jstrachan@gananda.org](mailto:jstrachan@gananda.org)

Social Work: Sue Thoen [sthoen@gananda.org](mailto:sthoen@gananda.org)

Psychologist: Jackie Pedulla [jpedulla@gananda.org](mailto:jpedulla@gananda.org)

Nurse: Deanna Hendricks [dhendricks@gananda.org](mailto:dhendricks@gananda.org)

**Gananda Middle School** ..... Office: 315 986-3521

Counseling: Cindy Stevens [cstevens@gananda.org](mailto:cstevens@gananda.org)

Social Work: Sue Thoen [sthoen@gananda.org](mailto:sthoen@gananda.org)

Psychologist: Caryn Armstrong [carmstrong@gananda.org](mailto:carmstrong@gananda.org)

Nurse: Kim Roach [kroach@gananda.org](mailto:kroach@gananda.org)

**Ruben A. Cirillo High School** ..... Office: 315 986-3521

Counseling: Kristen Kelleher [kkelleher@gananda.org](mailto:kkelleher@gananda.org) & Mary Crelley [mcrelley@gananda.org](mailto:mcrelley@gananda.org)

Social Work: Sue Thoen [sthoen@gananda.org](mailto:sthoen@gananda.org)

Psychologist: Caryn Armstrong [carmstrong@gananda.org](mailto:carmstrong@gananda.org)

Nurse: Laura Hall [LHall@gananda.org](mailto:LHall@gananda.org)

## Gananda Co-Located Services

Delphi Rise – Jenna Wainwright Prevention Educator

FCSFL - Therapy, referral is through MTSS meetings utilizing our referral form

Wayne Behavioral Health Network – To refer a student for School-Based Mental Health Services for MH treatment with the identified therapist assigned to Gananda School District, contact WBHN Intake Coordinator at 315-946-5722. Or you can also access outpatient services at our clinic at 1519 Nye Road, Lyons by contacting the above number.

# Lyons Central School District

Lyons Middle/High School ..... Main Office: 315.946.2200 x2202

Lyons Elementary School ..... Main Office: 315.946.2200 x3503

## Lyons Administration:

Superintendent: Dr. Matthew Barr [matthewbarr@lyonscsd.org](mailto:matthewbarr@lyonscsd.org) ext 2010

Assistant Sup. for Business: Mike Pangallo [mpangallo@lyonscsd.org](mailto:mpangallo@lyonscsd.org) ext 2017

Assistant Superintendent for Instruction: Rhonda Underhill – ext 2304

Director of Grants and Human Resource: Laurie Palmisano – ext 2303

Middle/High School Principal: Katrina Henderson - ext 2202

Middle/High School Assistant Principal: Renee Schott - [rschott@lyonscsd.org](mailto:rschott@lyonscsd.org) x2203

Middle/HS Assistant Principal/Athletic Director Mr. Zac Young - ext 2020

Elementary School Principal: Christine Taylor - ext 3501

Katie Jo Passero - Elementary School Assistant Principal ext 3248

Community Schools Principal: Libarid Alexanian – ext 2018

## Lyons In House Support Staff:

Counseling: Amy Buel [abrown1@lyonscsd.org](mailto:abrown1@lyonscsd.org) x3263

Psychologist: Jill Norris [jnorris2@lyonscsd.org](mailto:jnorris2@lyonscsd.org) x3228

Counselor 7-12: Cristi Kuhn [ckuhn@lyonscsd.org](mailto:ckuhn@lyonscsd.org) x2114

Counseling: Vanessa Riggi [vriggi@lyonscsd.org](mailto:vriggi@lyonscsd.org) x2206

Tracy Migliore [tmigliore@lyonscsd.org](mailto:tmigliore@lyonscsd.org) x2205

Psychologist: Jesse Strazzabosco [jstrazzabosco@lyonscsd.org](mailto:jstrazzabosco@lyonscsd.org) x2209

MS/HS Nurse: Jessica Buisch [jbuisch@lyonscsd.org](mailto:jbuisch@lyonscsd.org) x2504

ES Nurse: Alecia Young [ayoung@lyonscsd.org](mailto:ayoung@lyonscsd.org) x3504

## Lyons Co-Located Services:

Delphi Rise - Denise Marr, Prevention Counselor/Educator - [dmarr@delphirise.org](mailto:dmarr@delphirise.org)

FCSFL –Advocacy and Therapy, referral is through MTSS meetings utilizing our referral form. We also have 21<sup>st</sup> Century Advocacy Support and Prevention Advocacy Support (This is split with Clyde-Savannah)

Wayne Behavioral Health Network – To refer a student for School-Based Mental Health Services for MH treatment with the identified therapist assigned to Lyons School District, contact WBHN Intake Coordinator at 315-946-5722. Or you can also access outpatient services at our clinic at 1519 Nye Road, Lyons by contacting the above number.

# Marion Central School District

## Marion Administration and In-House Support Staff

### Marion District Office .....315-926-2300

Superintendent: Ellen Lloyd [elloyd@marioncs.org](mailto:elloyd@marioncs.org)

### Marion Elementary School Main Office .....315.926.4256

Interim Elementary Principal: Casey Steiner [csteiner@marioncs.org](mailto:csteiner@marioncs.org)

Interim Assistant Principal: Brianne Raes [braes@marioncs.org](mailto:braes@marioncs.org)

Marion Elementary School Counseling: Kaela Sittig [ksittig@marioncs.org](mailto:ksittig@marioncs.org)

Psychologist: Jennifer Rosa [jrosa@marioncs.org](mailto:jrosa@marioncs.org) Melissa Walker [mwalker@marioncs.org](mailto:mwalker@marioncs.org)

Nurse: Eliza Weis [eweis@marioncs.org](mailto:eweis@marioncs.org) 315.926.2431

### Marion Junior/Senior High School Main Office .....315.926.4228

Principal: Shane Dehn [sdehn@marioncs.org](mailto:sdehn@marioncs.org)

Assistant Principal: Casey Steiner [csteiner@marioncs.org](mailto:csteiner@marioncs.org)

Marion Junior/Senior High School Counseling Office: 315.926.2400

Counseling: Emily Johnson [ejohnson@marioncs.org](mailto:ejohnson@marioncs.org)

Karen Livingston [kmerrill@marioncs.org](mailto:kmerrill@marioncs.org)

Social Work: Kaela Sittig [ksittig@marioncs.org](mailto:ksittig@marioncs.org)

Psychologist: Ashley Maynard [Ashley.maynard@marioncs.org](mailto:Ashley.maynard@marioncs.org)

Nurse: Lauren Penders [lpenders@marioncs.org](mailto:lpenders@marioncs.org) 315.926.2406

## Marion Co-Located Services

Delphi Rise – Tom Weaver, Prevention Educator

Wayne Behavioral Health Network – To refer a student for School-Based Mental Health Services for MH treatment with the identified therapist assigned to Marion School District, contact WBHN Intake Coordinator at 315-946-5722. Or you can also access outpatient services at our clinic at 1519 Nye Road, Lyons by contacting the above number.

# Newark Central School District

**Perkins School** UPK-2<sup>nd</sup> Grade ..... Main Office: 315.332.3315

Principal: Peter Czerkas [peter.czerkas@newarkcsd.org](mailto:peter.czerkas@newarkcsd.org)  
Assistant Principal: MaryKate Wilbert [marykate.wilbert@newarkcsd.org](mailto:marykate.wilbert@newarkcsd.org)  
School Psychologist: Bryan Malchoff [Bryan.Malchoff@newarkcsd.org](mailto:Bryan.Malchoff@newarkcsd.org)  
School Psychologist: Lyndsey Yonker [Lyndsey.Yonker@newarkcsd.org](mailto:Lyndsey.Yonker@newarkcsd.org)  
School Social Worker: Chelsea Shaw [Chelsea.Shaw@newarkcsd.org](mailto:Chelsea.Shaw@newarkcsd.org)  
Nurse: Robin Pacello, RN 315-332-3312 [robin.pacello@newarkcsd.org](mailto:robin.pacello@newarkcsd.org)

**Lincoln School** UPK – 2<sup>nd</sup> Grade ..... Main Office: 315.332.3342

Principal: Kari Hamelinck [Kari.hamelinck@newarkcsd.org](mailto:Kari.hamelinck@newarkcsd.org)  
Assistant Principal: MaryKate Wilbert [marykate.wilbert@newarkcsd.org](mailto:marykate.wilbert@newarkcsd.org)  
School counselor: Kris Anderson [kris.anderson@newarkcsd.org](mailto:kris.anderson@newarkcsd.org)  
School Social Worker: Rebecca Adams [rebecca.adams@newarkcsd.org](mailto:rebecca.adams@newarkcsd.org)  
Nurse: Lisa Williams, LPN 315-332-3349 [lisa.williams@newarkcsd.org](mailto:lisa.williams@newarkcsd.org)

**Kelley School** ..... Main Office: 315.332.3326

Principal: Jeff Hamelinck [Jeffery.hamelinck@newarkcsd.org](mailto:Jeffery.hamelinck@newarkcsd.org)  
Asst. Principal: Keary Pender [keary.pender@newarkcsd.org](mailto:keary.pender@newarkcsd.org)  
School Psychologist: TBD  
School Counselor: Megan Pierce [Megan.pierce@newarkcsd.org](mailto:Megan.pierce@newarkcsd.org)  
School Behavior Specialist: Melissa Emerson [melissa.emerson@newarkcsd.org](mailto:melissa.emerson@newarkcsd.org)  
SHAPE Psychologist: Christopher Mykins [Christopher.mykins@newarkcsd.org](mailto:Christopher.mykins@newarkcsd.org)  
Nurse: Carlie Meyer, RN 315 332-3323 [carlie.meyer@newarkcsd.org](mailto:carlie.meyer@newarkcsd.org)

**Newark Middle School** Grades 6<sup>th</sup> – 8<sup>th</sup> ..... Main Office: 315.332.3290

Principal: John Ginter [john.ginter@newarkcsd.org](mailto:john.ginter@newarkcsd.org)  
Assistant Principal: Melanie Meyer [melanie.meyer@newarkcsd.org](mailto:melanie.meyer@newarkcsd.org)  
Admin Intern: Mikey Davanzo [Michael.Davanzo@newarkcsd.org](mailto:Michael.Davanzo@newarkcsd.org)  
Admin Intern: Christina Sullivan [Christina.Sullivan@newarkcsd.org](mailto:Christina.Sullivan@newarkcsd.org)  
Counselor: Jessica Orchard [jessica.orchard@newarkcsd.org](mailto:jessica.orchard@newarkcsd.org)  
Counselor: Matt May [Matthew.may@newarkcsd.org](mailto:Matthew.may@newarkcsd.org)  
Counselor: Stefan Uveges [Stefan.Uveges@newarkcsd.org](mailto:Stefan.Uveges@newarkcsd.org)  
REDS Room School Social Worker: Katherine Davison [Katherine.davison@newarkcsd.org](mailto:Katherine.davison@newarkcsd.org)  
Behavior Specialist: Rebecca Battle [Rebecca.battle@newarkcsd.org](mailto:Rebecca.battle@newarkcsd.org)



UPK-12 School Social Worker: Julia Solan [Julia.solan@newarkcsd.org](mailto:Julia.solan@newarkcsd.org)

Nurse: Annette Adams, LPN 315-332-3305 [annette.adams@newarkcsd.org](mailto:annette.adams@newarkcsd.org)

**Newark High School** Grades 9-12 ..... Main Office: 315.332.3240

Principal: Kelly Zielke [Kelly.zielke@newarkcsd.org](mailto:Kelly.zielke@newarkcsd.org)

Asst. Principal: TBD

Asst. Principal: Addie Klaehn [Addie.Klaehn@newarkcsd.org](mailto:Addie.Klaehn@newarkcsd.org)

Athletic Director: Jonathan Mastin [Jonathan.mastin@newarkcsd.org](mailto:Jonathan.mastin@newarkcsd.org)

Counselor: Danielle Mcgavisk [danielle.mcgavisk@newarkcsd.org](mailto:danielle.mcgavisk@newarkcsd.org)

Counselor: Caty Hugunine [cathryn.hugunine@newarkcsd.org](mailto:cathryn.hugunine@newarkcsd.org)

Counselor: Sue Gardner [sue.gardner@newarkcsd.org](mailto:sue.gardner@newarkcsd.org)

Counselor: Stephanie Specht [stephanie.specht@newarkcsd.org](mailto:stephanie.specht@newarkcsd.org)

School Psychologist: Kristin Leonard [kristin.leonard@newarkcsd.org](mailto:kristin.leonard@newarkcsd.org)

School Psychologist: Rene Sinicropi [rene.sinicropi@newarkcsd.org](mailto:rene.sinicropi@newarkcsd.org)

Prevention Counselor: Krystal Crawford [krystal.crawford@newarkcsd.org](mailto:krystal.crawford@newarkcsd.org)

Nurse: Inger Rothpearl, RN 315-332-3244 [inger.rothpearl@newarkcsd.org](mailto:inger.rothpearl@newarkcsd.org)

Nurse: Robyn Monahan, LPN 315-332-3253 [robyn.monahan@newarkcsd.org](mailto:robyn.monahan@newarkcsd.org)

**Newark Co-Located Services**

Catholic Charities – Lincoln and Perkins school only! To refer a student for school based mental health services, please connect with building admin or counselor.

Delphi Rise – Alexa Bourne-Frazer - Prevention Educator

FCSFL – Therapists in Resiliency Room (Kelley, Middle, and High School), referral process is through administration as an alternative to suspension. Short-term crisis, not ongoing therapy.

Wayne Behavioral Health Network – To refer a student for School-Based Mental Health Services for MH treatment with the identified therapist assigned to Newark School District, contact WBHN Intake Coordinator at 315-946-5722. Or you can also access outpatient services at our clinic at 1519 Nye Road, Lyons by contacting the above number.

# **North Rose-Wolcott Central School District**

**North Rose-Wolcott Elementary School.....** Main Office: 315.587.4005

Principal: Christie Graves [cgraves@nrwcs.org](mailto:cgraves@nrwcs.org)

Assistant Principal: Joe Canori [jcanori@nrwcs.org](mailto:jcanori@nrwcs.org)

**North Rose-Wolcott Middle School .....** Main Office: 315.594.3130

Principal: Crystal Rupp - [Crupp@nrwcs.org](mailto:Crupp@nrwcs.org)

Assistant Principal: Scott Hassall [Shassall@nrwcs.org](mailto:Shassall@nrwcs.org)

**North Rose-Wolcott High School .....** Main Office: 315.594.3100

Principal: Scott Bradley [sbradley@nrwcs.org](mailto:sbradley@nrwcs.org)

Alternative School Principal (Cougar Ops): Mark Mathews [mmathews@nrwcs.org](mailto:mmathews@nrwcs.org)

Assistant Principal: **TBA**

## **North Rose-Wolcott In-House Support Staff**

Nurse Elementary School UPK-4 : Elizabeth Decker RN MSN [edecker@nrwcs.org](mailto:edecker@nrwcs.org)

Nurse Middle School gr. 5-8 **TBA** 315-594-4121 ext 2112

Nurse High School Gr. 9-12 Vickie Randall RN [vrandall@nrwcs.org](mailto:vrandall@nrwcs.org)

Optimal Health Coordinator upk-12 Stephanie Humbert RN, BSN [shumbert@nrwcs.org](mailto:shumbert@nrwcs.org)

## **North Rose-Wolcott In-House Support Staff**

Nurse Elementary School UPK-4 : Elizabeth Decker RN MSN [edecker@nrwcs.org](mailto:edecker@nrwcs.org)

Nurse Middle School gr. 5-8 \_\_\_\_\_ 315-594-4121 ext 2112

Nurse High School Gr. 9-12 Vickie Randall RN [vrandall@nrwcs.org](mailto:vrandall@nrwcs.org)

Optimal Health Coordinator upk-12 Stephanie Humbert RN, BSN [shumbert@nrwcs.org](mailto:shumbert@nrwcs.org)

## **North Rose-Wolcott Co-Located Services**

Delphi Rise – Sara Pierce - Prevention Counselor/Educator

FCSFL - Advocacy and Therapy, referral is through MTSS meetings utilizing our referral form

Wayne Behavioral Health Network – To refer a student for School-Based Mental Health Services for MH treatment with the identified therapist assigned to North Rose-Wolcott School District, contact WBHN Intake Coordinator at 315-946-5722. Or you can also access outpatient services at our clinic at 1519 Nye Road, Lyons by contacting the above number.

# Palmyra-Macedon Central School District

## **Pal-Mac District Office ..... 315-597-3400**

Director of Special Services Joan Karnisky joan.karnisky@palmaccd.org

Community and Family Outreach Coordinator Kimberly Stewart kimberly.stewart@palmaccd.org

Director of School Safety John Colella john.colella@palmaccd.org

Trauma Informed School Coordinator Tane Robinson tane.robinson@palmaccd.org

## **Pal-Mac Primary School ..... 315-597-3400**

School Counselor Victoria Blazey [victoria.blazey@palmaccd.org](mailto:victoria.blazey@palmaccd.org)

School Psychologist Dr. Karin Giudici [karin.giudici@palmaccd.org](mailto:karin.giudici@palmaccd.org)

School Psychologist Nicole Castronovo [nicole.castronovo@palmaccd.org](mailto:nicole.castronovo@palmaccd.org)

Behavior Specialist Jaymee Kramer [jaymee.kramer@palmaccd.org](mailto:jaymee.kramer@palmaccd.org)

Nurse Cassandra Tice R.N. [cassandra.tice@palmaccd.org](mailto:cassandra.tice@palmaccd.org) 315-597-3400

Nurse Justine Ramos L.P.N. [justine.ramos@palmaccd.org](mailto:justine.ramos@palmaccd.org) 315-597-3400

Dean of Students Wendy Ellis [wendy.ellis@palmaccd.org](mailto:wendy.ellis@palmaccd.org) 315-597-3400

## **Pal-Mac Intermediate School ..... 315-597-3400**

School Counselor Darci Perrotta darci.perrotta@palmaccd.org\Intermediate School

School Psychologist Mary-Lynn McHugh marylynn.mchugh@palmaccd.org

School Psychologist (8:1:1 Classroom) Adrienne Nolan adrienne.nolan@palmaccd.org

Behavior Specialist Jaymee Kramer jaymee.kramer@palmaccd.org

Nurse Lauren Baker R.N. lauren.baker@palmaccd.org

Dean of Students Tane Robinson tane.robinson@palmaccd.org

## **Pal-Mac Middle School .... 315-597-5400**

School Counselor Rose Zinkowski rose.zinkowski@palmaccd.org

School Counselor Hayley Chase hayley.chase@palmaccd.org

School Psychologist Rachael Sando

School Psychologist (.5) Kori Gordner kori.gordner@palmaccd.org

School Psychologist (8:1:1 Classroom) Kristin Dehmler kristin.dehmler@palmaccd.org

Behavior Specialist (.5) Kori Gordner kori.gordner@palmaccd.org

Nurse Laura Kubasiewicz R.N.      laura.kubasiewicz@palmacccd.org

Dean of Students      Colleen Moquin      colleen.moquin@palmacccd.org

**Pal-Mac High School ..... 315-597-5400**

School Counselor      Lindsay Daniel      lindsay.daniel@palmacccd.org

School Counselor      Jennifer Narum      jennifer.narum@palmacccd.org

School Counselor      Maureen Harris      maureen.harris@palmacccd.org

School Psychologist      Rachael Sando

School Psychologist (.5)      Katie Crane      kathryn.crane@palmacccd.org

High School      Behavior Specialist (.5)      Katie Crane      kathryn.crane@palmacccd.org

High School      Nurse      Deborah Matzan R.N.      deborah.matzan@palmacccd.org

High School      Dean of Students      Neil Fralick      neil.fralick@palmacccd.org

**Pal-Mac Co-Located Services**

Delphi Rise – Tom Weaver - Prevention Educator

FCSFL – Therapy, referral is through MTSS meetings utilizing our referral form

Wayne Behavioral Health Network – To refer a student for School-Based Mental Health Services for MH treatment with the identified therapist assigned to Pal-Mac School District, contact WBHN Intake Coordinator at 315-946-5722. Or you can also access outpatient services at our clinic at 1519 Nye Road, Lyons by contacting the above number.

# Red Creek Central School District

## Red Creek School Administration:

**M.W. Cuyler Elementary School** ..... Main Office: 315.754.2100

Principal: Dennis Taylor [dennis.taylor@rccsd.org](mailto:dennis.taylor@rccsd.org)

**Red Creek Middle School** ..... Main Office: 315.754.2070

Principal: Matthew VanOrman [matthew.vanorman@rccsd.org](mailto:matthew.vanorman@rccsd.org)

**Red Creek High School** ..... Main Office: 315.754.2040

Principal: Raina Hinman [raina.hinman@rccsd.org](mailto:raina.hinman@rccsd.org)

Vice Principal (MS/HS): Brian Smiley [brian.smiley@rccsd.org](mailto:brian.smiley@rccsd.org)

Dir. of Grants and Community Schools: Jennifer DeVinney [Jennifer.DeVinney@rccsd.org](mailto:Jennifer.DeVinney@rccsd.org)

## Red Creek In House Support

Elementary Nurse: Kristy Smith [Kristy.Smith@rccsd.org](mailto:Kristy.Smith@rccsd.org) 315.754.2156

MS/HS Nurse: Gloria Parsnow [gloria.parsnow@rccsd.org](mailto:gloria.parsnow@rccsd.org) 315.754.2158

Elementary School Counselor: Kasey Evans [kasey.evans@rccsd.org](mailto:kasey.evans@rccsd.org) 315.754.2050

Elementary Social Worker: Sharon Rosati [Sharon.rosati@rccsd.org](mailto:Sharon.rosati@rccsd.org) 315.754.2040 x4256

Elementary Psychologist: Ashlee Fairchild\* [ashlee.fairchild@rccsd.org](mailto:ashlee.fairchild@rccsd.org) 315.754.2100 x4250

MS Counselor: Katheryn Armstrong [Katheryn.armstrong@rccsd.org](mailto:Katheryn.armstrong@rccsd.org) 315.754.2054

HS Counselor: Shayla Pasker [shayla.pasker@rccsd.org](mailto:shayla.pasker@rccsd.org) 315.754.2073

MS/HS Social Worker: Sharon Rosati [Sharon.rosati@rccsd.org](mailto:Sharon.rosati@rccsd.org) 315.754.2040 x4256

MS/HS School Psychologist: Kristin Arnone\* [Kristin.arnone@rccsd.org](mailto:Kristin.arnone@rccsd.org) 315.754.2023

\*DASA Coordinators

## Red Creek Co-Located Services

Catholic Charities: Cindy Edmondson [cindy.edmondson@rccsd.org](mailto:cindy.edmondson@rccsd.org) 315.754.2100 x4249

Delphi Rise – Kevin Dickes, Prevention Counselor/Educator [kdickes@delphirise.org](mailto:kdickes@delphirise.org)

Wayne Behavioral Health Network – To refer a student for School-Based Mental Health Services for MH treatment with the identified therapist assigned to Red Creek School District, contact WBHN Intake Coordinator at 315-946-5722. Or you can also access outpatient services at our clinic at 1519 Nye Road, Lyons by contacting the above number.

# Sodus Central School District

## **Sodus Elementary School** ..... Main Office: 315.483.5282

Principal: Michael Sereno [msereno@soduscsd.org](mailto:msereno@soduscsd.org)

Elementary School Psychologist Colleen Blunden [cbluden@soduscsd.org](mailto:cbluden@soduscsd.org)

Elementary School Social Worker Deb Palmer [dpalmer@soduscsd.org](mailto:dpalmer@soduscsd.org)

Elementary School Nurse Darcy Davidson [ddavidson@soduscsd.org](mailto:ddavidson@soduscsd.org)

Elementary Crisis Intervention Teacher Assistant Charlotte Baincbain [baincbain@soduscsd.org](mailto:baincbain@soduscsd.org)

## **Sodus Intermediate School** ..... Main Office: 315.483.5242

Intermediate School Principal: Gene Hoskins [ehoskins@soduscsd.org](mailto:ehoskins@soduscsd.org)

Intermediate School Dean of Students Jim Sergeant [jsergeant@soduscsd.org](mailto:jsergeant@soduscsd.org)

Intermediate School Psychologist Stephen Humbert [shumbert@soduscsd.org](mailto:shumbert@soduscsd.org)

Intermediate School Psychologist/Counselor Michelle Bucenec [mbucenec@soduscsd.org](mailto:mbucenec@soduscsd.org)

Intermediate School Nurse Rebecca Bourne [rbourne@soduscsd.org](mailto:rbourne@soduscsd.org)

Intermediate School Crisis Intervention Teacher Assistant Eric Graves [egraves@soduscsd.org](mailto:egraves@soduscsd.org)

## **Sodus Junior/Senior High School** ..... Main Office: 315.483.5261

Jr. Sr. High School Principal: Arkee Allen [aallen@soduscsd.org](mailto:aallen@soduscsd.org)

Jr. Sr. High School Assistant Principal: Tina Peets [tpeets@soduscsd.org](mailto:tpeets@soduscsd.org)

Jr. Sr. High School Principal Arkee Allen [aallen@soduscsd.org](mailto:aallen@soduscsd.org)

Jr. Sr. High School Assistant Principal Dr. Tina Peets [tpeets@soduscsd.org](mailto:tpeets@soduscsd.org)

Jr. Sr. High School Administrative Intern Megann Johnson [mjohnson5@soduscsd.org](mailto:mjohnson5@soduscsd.org)

Jr. Sr. High School Dean of Students Brian Dastyck [bdastyck@soduscsd.org](mailto:bdastyck@soduscsd.org)

Jr. Sr. High School Guidance Director/Counselor Colleen Sheahen [csheahen@soduscsd.org](mailto:csheahen@soduscsd.org)

Jr. Sr. High School Psychologist Julie DeRoo [jderoo@soduscsd.org](mailto:jderoo@soduscsd.org)

Jr. Sr. High School Psychologist Stephen Humbert [shumbert@soduscsd.org](mailto:shumbert@soduscsd.org)

Jr. Sr. High School Guidance Counselor Meredith Thiell [mthiell@soduscsd.org](mailto:mthiell@soduscsd.org)

Jr. Sr. High School Social Worker Laura Hayton-Oechsle [loechsle@soduscsd.org](mailto:loechsle@soduscsd.org)

Jr. Sr. High School Nurse Jackqueline Budinger [jbudinger@soduscsd.org](mailto:jbudinger@soduscsd.org)

Jr. Sr. High School Crisis Intervention Teacher Assistant Ryan Grinnell [rgrinnell@soduscsd.org](mailto:rgrinnell@soduscsd.org)

Jr. Sr. High School Crisis Intervention Teacher Assistant Chris Wilbur [cwilbur@soduscsd.org](mailto:cwilbur@soduscsd.org)

## **Sodus District Staff:**

District Wide Superintendent Nelson Kise

District Wide Assistant Superintendent of Curriculum & Instruction Dr. Heather Uetz

District Wide Director of Student Services Joseph Keeney

District Wide Director of Instructional Technology Tim Padden

District Wide Director of Athletics Health and PE/Wellness Committee Mike Magin

District Wide Community Schools Director Jay Roscup

District Wide Jill Harper Health Integration Specialist

District Wide Dr. Hennesey Lustica Community Schools Mental Health Director

District Wide Valerie Fanning Director of Grants

District Wide Kristen Defeo MTSS Coordinator

### **Sodus Co-Located Services**

Catholic Charities - College Bound Coordinator-High School Teresa Gable [teresa.gable@dor.org](mailto:teresa.gable@dor.org)

Catholic Charities - CCIP-Intermediate School Cindy Edmondson [Cynthia.Edmondson@dor.org](mailto:Cynthia.Edmondson@dor.org)

Community Advocate Peaceful Schools - Ed Rose [erose@soduscsd.org](mailto:erose@soduscsd.org)

Delphi Rise – Jenna Wainwright Prevention Educator & Jackie Petzing Prevention Counselor/Educator

FCSFL – Advocacy and Therapy, referral is through MTSS meetings utilizing our referral form; Advocate Family Counseling Services of the Finger Lakes - Amanda Wilson [awilson@soduscsd.org](mailto:awilson@soduscsd.org); Family Counseling Services of the Finger Lakes Therapist Laura Alexander [laalexander@soduscsd.org](mailto:laalexander@soduscsd.org)

Home School Coordinator Wayne County Action Program Tammy Thiel [tthiel@soduscsd.org](mailto:tthiel@soduscsd.org)

Wayne Behavioral Health Network – To refer a student for School-Based Mental Health Services for MH treatment with the identified therapist assigned to Sodus School District, contact WBHN Intake Coordinator at 315-946-5722. Or you can also access outpatient services at our clinic at 1519 Nye Road, Lyons by contacting the above number.

# Wayne Central School District

**Wayne Primary School ..... Main Office: 315.524.1150**

Principal: Mitch Daly [mdaly@waynecsd.org](mailto:mdaly@waynecsd.org)

**Wayne Elementary School ..... Main Office: 315.524.1130**

Principal: Donna Rizzo [drizzo@waynecsd.org](mailto:drizzo@waynecsd.org)

**Wayne Middle School ..... Main Office: 315.524.1080**

Principal: Kevin Page [kpage@waynecsd.org](mailto:kpage@waynecsd.org)

Assistant Principal: Natalie Sonnevile [nsonnevile@waynecsd.org](mailto:nsonnevile@waynecsd.org)

Assistant Principal: Christopher Shaffer [cshaffer@waynecsd.org](mailto:cshaffer@waynecsd.org)

**Wayne High School ..... Main Office: 315.524.1050**

Principal: Jason Berger [jberger@waynecsd.org](mailto:jberger@waynecsd.org)

Assistant Principal: Nathan Goodness [ngoodness@waynecsd.org](mailto:ngoodness@waynecsd.org)

Assistant Principal: Jacqueline Senecal [jsenecal@waynecsd.org](mailto:jsenecal@waynecsd.org)

## Wayne In-House Support Staff

### Wayne Primary School

Nurse: Janelle Drexler, R.N.

Counselor: Joan Prevost

School Psychologist: Jennifer Spina

### Wayne Elementary School

Nurse: Angela Marcellus

Counselor: Julie Stanton

School Psychologist: Anne Wigent

### Wayne Middle School

Nurse: Antoinette Harris

Counselor: Melanie Cerra, Phil Corleto, Shari Stone-Fredericks

School Psychologist: Melissa Maracle

### Wayne High School

Nurse: Kristin Parker

Counselor: Lisa Conner, Kelly Gallup, Kimberly Sherwin, Cahty Stohr

School Psychologist: Marisa Malone

## Wayne Co-Located Services

Delphi Rise – Jocelyn Rivas – Prevention Educator/Counselor

Wayne Behavioral Health Network – To refer a student for School-Based Mental Health Services for MH treatment with the identified therapist assigned to Wayne School District, contact WBHN Intake Coordinator at 315-946-5722. Or you can also access outpatient services at our clinic at 1519 Nye Road, Lyons by contacting the above number.



# ***Williamson Central School District***

Williamson Elementary School ..... Main Office: 315.589.9668

Principal: Ellen Saxby [esaxby2@williamsoncentral.org](mailto:esaxby2@williamsoncentral.org)

Assistant Principal: Karen Hoody [khoody@williamsoncentral.org](mailto:khoody@williamsoncentral.org)

Williamson Middle School ..... Main Office: 315.589.9665

Principal: John Fulmer [jfulmer@williamsoncentral.org](mailto:jfulmer@williamsoncentral.org)

Assistant Principal: Kathryn Taylor [ktaylor@williamsoncentral.org](mailto:ktaylor@williamsoncentral.org)

Williamson High School ..... Main Office: 315.589.9621

Principal: Kathryn Avery [kavery@williamsoncentral.org](mailto:kavery@williamsoncentral.org)

Assistant Principal: Hilary Chaya [hchaya@williamsoncentral.org](mailto:hchaya@williamsoncentral.org)

## **Williamson In-House Support Staff**

### **Williamson Co-Located Services**

Delphi Rise – Bridget Dougherty-Herman, Prevention Educator

FCSFL –Therapy, referral is through MTSS meetings utilizing our referral form

Wayne Behavioral Health Network – To refer a student for School-Based Mental Health Services for MH treatment with the identified therapist assigned to Williamson School District, contact WBHN Intake Coordinator at 315-946-5722. Or you can also access outpatient services at our clinic at 1519 Nye Road, Lyons by contacting the above number.

# Wayne Education Center

## Wayne FL BOCES

Wayne Education Center ..... Main Office: 315.589.2400  
4440 Ridge Rd, Williamson

### **WFL BOCES Williamson Administration**

Superintendent: Vicma Ramos

Assistant Superintendent for Instruction: Erin Fairben

Wayne Education Center Middle/High School Principal: Jessica Newby (acting principal)

Wayne Education Center Middle/High School Assistant Principal: Greg Maine (acting vice principal)

Behavior Specialist: Carrie Case

### **WFL BOCES Williamson In House Support Staff**

Counseling: Ashlee Liberatore, Julie Gardner, Nicole Bindler, Shara Perez, Kim Sonthana

Psychologist: Connor Delavak, Christine Decker

Nurse: Kathy Logan

### **Wayne BOCES Williamson In House Support Staff:**

Wayne Behavioral Health Network – To refer a student for School-Based Mental Health Services for MH treatment with the identified therapist assigned to BOCES Educational Center, contact WBHN Intake Coordinator at 315-946-5722. Or you can also access outpatient services at our clinic at 1519 Nye Road, Lyons by contacting the above number.

Wayne County Sheriff's Office-Deputy Brian Steinruck, School Resource Officer